

PECTUS PHOTO INSTRUCTIONS



HOW TO TAKE PECTUS PHOTOS

While wearing your T-Joe Brace you may need to take a set of photos to monitor your results. Follow the guidelines below and the sample photos on the back of this sheet for best results:

- Stand with heels about 12 inches away from a solid, dark colored wall. Dim the room lights to prevent excessive glare off the skin.
- Keep arms at side with a relaxed and natural stance. Eyes should be looking straight ahead, not at the camera.
- The camera person should stay in the same spot and have the pectus person rotate/move so that each photo is the same distance from camera.
- When taking the photos the camera should be at the same level as the pectus defect. So if the patient is a child the cameraman may have to kneel.
- The photos should be taken from the nose down to about an inch below the navel. Please, no face. Remove shoes - socks or bare feet only. Lastly wear shorts that show the knees.
- For males and undeveloped females (children) remove all clothing from the waist up. The chest should be bare skin.
- For developed females the breast area needs to be covered but not the pectus defect. A sports bra or compression shirt can also be worn.
- Take the photos of the pectus person at the following angles. See the photo examples on the back for a better understanding:

1. Front view
2. Left side view
3. Left 45 degree
4. Back view
5. Right side view
6. Right 45 degree
7. Top down view
8. Bottom up view
9. Full view front
10. Full view right side
11. Full view left side
12. Full view back side

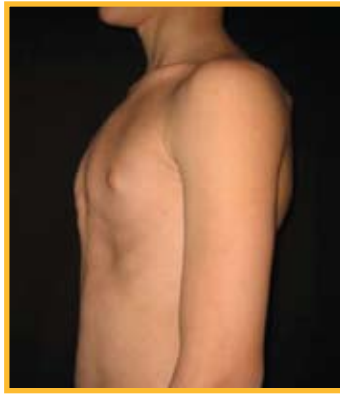
See the photo examples on the reverse side for a better understanding.



PECTUS SERVICES
PROVIDING PECTUS CARE SINCE 1996



1. Front view



2. Left side view



3. Left 45 degree



4. Back view



5. Right side view



6. Right 45 degree



7. Overhead view



8. Bottom up view



9. Full view front



10. Full view right side



11. Full view left side



12. Full view back side